



Listen to what patients REALLY want



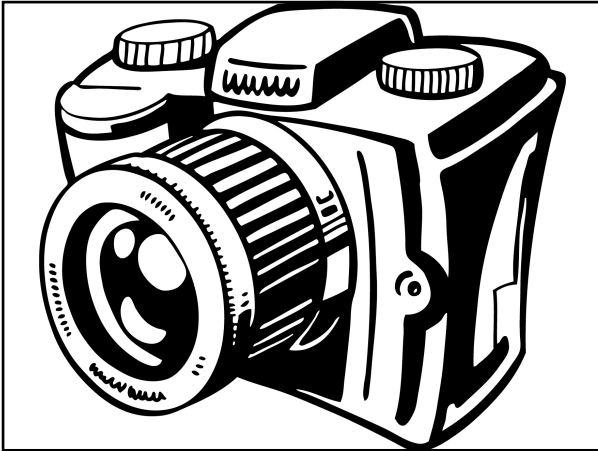
Personalized "precision" medicine













Viewpoint

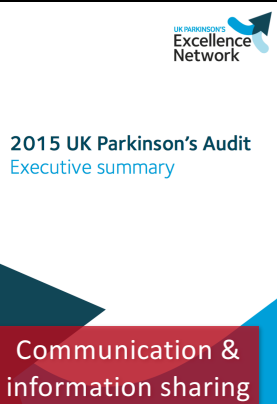
 Avoidable waste in the production and reporting of research evidence
Iain Chalmers, Paul Glasziou

Lancet 2009; 374: 86-89





Educating patients



J Neurol
DOI 10.1007/s00415-015-7877-2

CrossMark

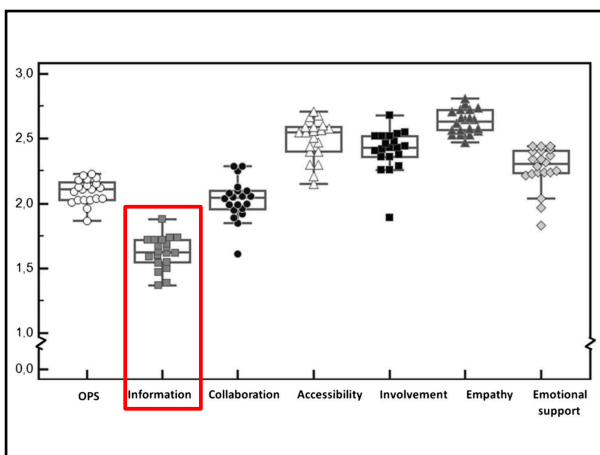
ORIGINAL COMMUNICATION

Capturing patients' experiences to change Parkinson's disease care delivery: a multicenter study

Martijn van der Eijk¹ · Marjan J. Faber^{1,2} · Bart Post³ · Michael S. Okun⁴ · Peter Schmidt⁵ · Marten Munneke^{2,3} · Bastiaan R. Bloem³

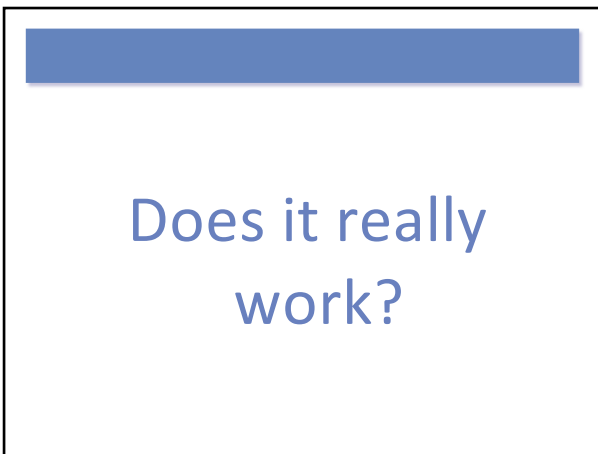
Received: 14 May 2015 / Revised: 31 July 2015 / Accepted: 1 August 2015
© The Author(s) 2015. This article is published with open access at Springerlink.com

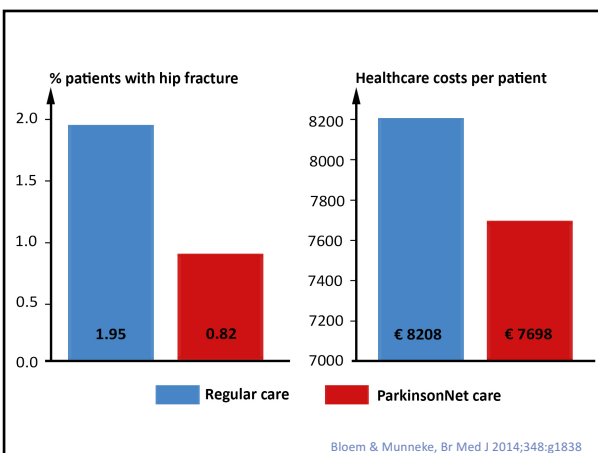
NPF | NATIONAL PARKINSON FOUNDATION
Improving care, Improving lives

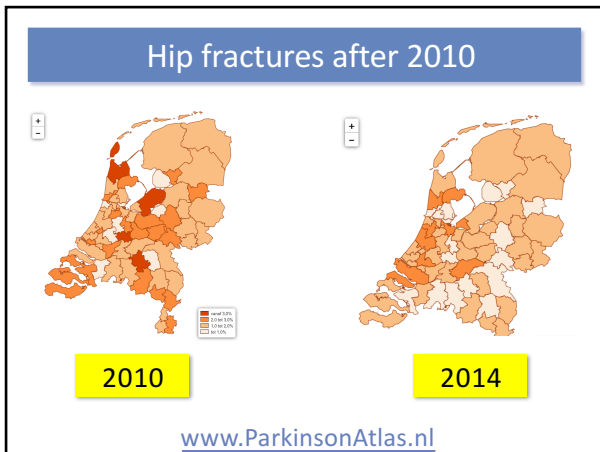












Journal of Parkinson's Disease 5 (2015) 575–580
DOI: 10.3233/JPD-150612
IOS Press

575

Hidden Treasures and Secret Pitfalls: Application of the Capability Approach to ParkinsonNet

Marcel Canoy^a, Marjan J. Faber^{b,d}, Marten Munneke^{b,e}, Wija Oortwijn^g, Maarten J. Nijkrake^{b,f}
and Bastiaan R. Bloem^{c,g,*}

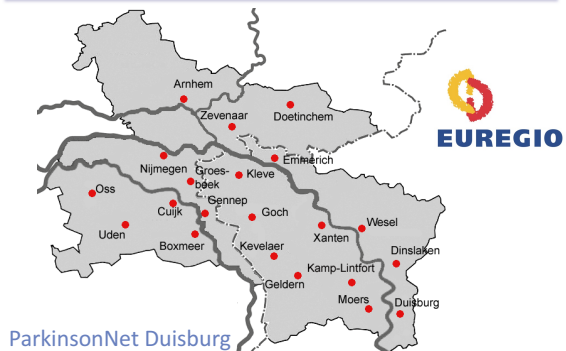
^aErasmus School of Accounting and Assurance, Rotterdam, the Netherlands
^bRadboud Institute for Health Sciences, Nijmegen, the Netherlands
^cDonders Institute for Brain, Cognition and Behaviour, Nijmegen, the Netherlands
^dInstitute for Quality of Healthcare, Radboud University Medical Center, Nijmegen, the Netherlands
^eDepartment of Neurology, Radboud University Medical Center, Nijmegen, the Netherlands
^fDepartment of Rehabilitation, Radboud University Medical Center, Nijmegen, the Netherlands
^gEcorys, Rotterdam, the Netherlands

International extension

Our approach



Extension to Germany



Partnership with Kaiser Permanente











