

FYI: Note that the embedded images may not render - you will be able to download from our web site in due course>

Ken

On Friday, 11 December 2015, 14:59, Research Support Network <RSN@parkinsons.org.uk> wrote:

Hello research supporter

At the beginning of each month we put together a roundup of all the latest research developments, events, opportunities and other news that we hope will be of interest to our research supporters.

Research news

- **The winners of our Picturing Parkinson's competition have been announced.** Take a look at some of the brilliant images Parkinson's researchers entered for this year's competition here: <http://bit.ly/1LR0FIj>



Participate in research

- **Have you taken part in a research opportunity?** We would love to hear from you.

As part of our ongoing commitment to increasing participation in research, we would like you to share your experiences with us. Please provide us with comments on any research you have taken part in, from questionnaires to drug trials- via our **online survey**.

You can find our survey here: <http://bit.ly/1SzkMKe>



· **Opportunity to join the RSN Development Team**

Would you like the opportunity to help shape the Research Support Network? We are looking for new volunteer members to join the RSN Development Team, to work with us to achieve our objectives in:

- Increasing awareness and understanding of research
- Encouraging increased participation in research
- Encouraging and supporting patient and public involvement in research

If this role interests you, please contact me for further information and an application form:

Anna-Louise Smith

Research Support Network Manager

Tel: 020 7963 9398 Email: rsn@parkinsons.org.uk

· **Help out the NIHR with their research communication**

The National Institute for Health Research (NIHR) have recently set up the [NIHR Dissemination Centre](#) to try and make recent science and health research more accessible to those who need it. Each week, they publish 3 or 4 new 'Signals' – short summaries of health research that have recently appeared in peer-reviewed journals.

The NIHR Dissemination Centre editorial team need 'raters' to help decide which research is the most interesting and relevant for the public. Raters will be asked to read and score short research abstracts to decide whether the research should be written as a 'Signal'.

What is involved?

As a rater you will only be sent abstracts related to your area of interest and no more than 3 will be sent per month. Scores and comments on each abstract should take between 10-15 minutes to complete.

Who can take part?

Anyone. They welcome everyone to visit their website and sign up as a rater. **Public raters are also offered an honorarium of £5 for each rating they complete.** You can find out more information about **how to become a rater** [here](#).

For any further enquiries about the NIHR Dissemination centre, please contact:
disseminationcentre@soton.ac.uk

Spread the word

Please circulate this roundup to members of your Parkinson's UK local group, Parkinson's nurse, family

and friends who might be interested.

Not a member of our Research Support Network? Join us!

Keep up to date with all the latest research news, events and opportunities to take part and help shape research. **Sign up here** – <http://bit.ly/rsnsignup>

Thank you for supporting research!

Sophie McLachlan

Research Communications Officer

Parkinson's UK, 215 Vauxhall Bridge Road, London SW1V 1EJ

Tel: 020 7963 9313 Email: smclachlan@parkinsons.org.uk

Help us find [new and better treatments](#) in years, not decades.

We're the Parkinson's charity that drives better care, treatments and quality of life. Together we can bring forward the day when no one fears Parkinson's.

Web: parkinsons.org.uk Facebook: [facebook.com/parkinsonsuk](https://www.facebook.com/parkinsonsuk) Twitter: twitter.com/parkinsonsuk

We're the Parkinson's support and research charity. Help us find a cure and improve life for everyone affected by Parkinson's. Parkinson's UK is the operating name of the Parkinson's Disease Society of the United Kingdom. A company limited by guarantee. Registered in England and Wales (948776). Registered office: 215 Vauxhall Bridge Road, Victoria, London, SW1V 1EJ. A charity registered in England and Wales (258197) and in Scotland (SC037554).

Image001.jpg

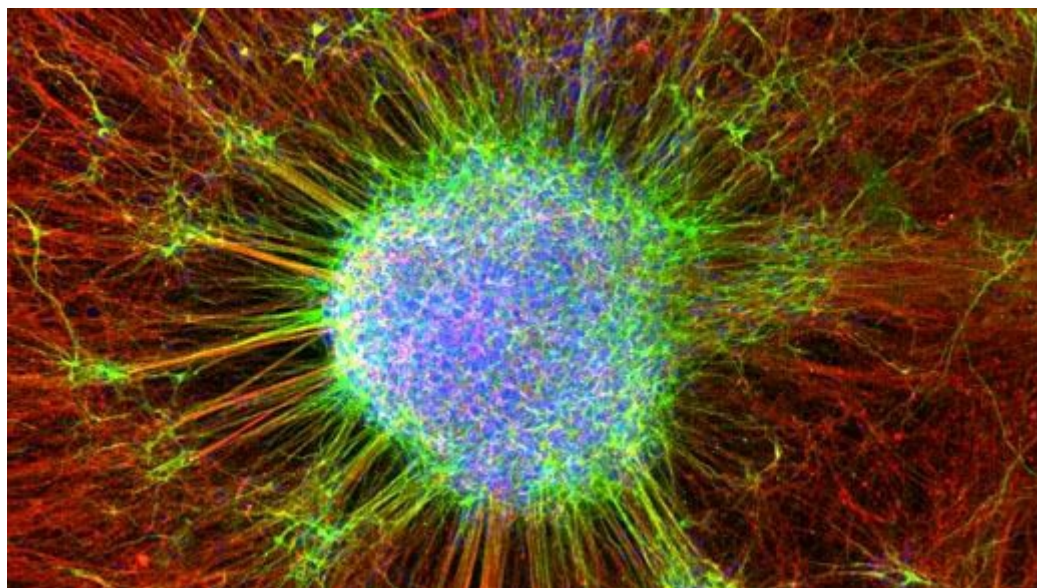


image002.png



Attachments:

image001.jpg

187 KB

image002.png

176 KB