
Subject: Research Roundup May 2015

From: Research Support Network (RSN@parkinsons.org.uk)

To: ken.bowler@btinternet.com;

Date: Friday, 1 May 2015, 9:22

Hello research supporter

At the beginning of each month we send out a roundup of all the latest research developments, events, opportunities and other news that we hope will be of interest to our research supporters.

Research news

- **GDNF Parkinson's drug trial reaches recruitment target**

We're delighted to announce that we have successfully recruited the 36 people with Parkinson's needed to take part in our ground breaking GDNF trial. Read more – <http://bit.ly/1EFHja7>

- **Stem cell treatment for Parkinson's a step closer**

Parkinson's UK award researchers at Cardiff University over £28,000 to fund research which could one day result in a life-changing treatment for people with Parkinson's. Read more – <http://bit.ly/1JbISMT>

- **Milk and Parkinson's - what's the story?**

We get to the bottom of claims in the papers today that drinking milk is the new way to stave off Parkinson's and Alzheimer's. Read more – <http://bit.ly/1zgj8yr>

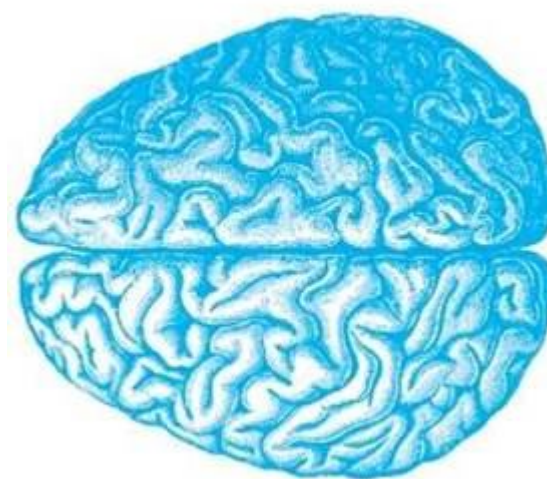
Get involved: Are you new to Parkinson's research and finding the science confusing?

If you are, we're looking for 10 people affected by Parkinson's to comment on a new resource we're producing as a basic introduction to what happens inside a Parkinson's brain cell.

How can you help?

We'll email you a copy of the resource and would like to hear your thoughts on whether it is clear and easy to read. Is it at the right level, perhaps it needs more or less detail? Is there anything we've missed? How would you use it? And any other comments you might have.

If you can help, please let us know by emailing us at research@parkinsons.org.uk by **Wednesday 6 May 2015**.



Also in the news



- Watch why **patient and public involvement** in NIHR Research is important - <http://bit.ly/1ztLZQg>
- What does the **EU** clinical trials regulation spell for the future of medical research? - <http://bit.ly/1O1DBTG>
- How to build real patient-centered **Pharmaceutical Companies** - <http://bit.ly/1GyXwL3>
- **Cochrane** is an international network that provides high quality, trust information to help with decision-making in healthcare. Take part in their new strategy consultation here - <http://svy.mk/1Kxdn0y>

Next steps

Please circulate this roundup to members of your Parkinson's UK local group, Parkinson's nurse, family and friends who might be interested.

Not a member of our Research Support Network? Join us!

Keep up to date with all the latest research news, events and opportunities to take part and help shape research. **Sign up here** – <http://bit.ly/rsnsignup>

Best wishes

Hannah

Hannah Churchill

Research Communications Officer

Parkinson's UK

215 Vauxhall Bridge Road

London SW1V 1EJ

Tel: 0207 963 9313

Email: hchurchill@parkinsons.org.uk

Help us find a cure and improve life for everyone affected by Parkinson's.

Web: parkinsons.org.uk Facebook: www.facebook.com/parkinsonsuk Twitter:

www.twitter.com/parkinsonsuk

We're the Parkinson's support and research charity. Help us find a cure and improve life for everyone affected by Parkinson's. Parkinson's UK is the operating name of the Parkinson's Disease Society of the United Kingdom. A company limited by guarantee. Registered in England and Wales (948776). Registered office: 215 Vauxhall Bridge Road, Victoria, London, SW1V 1EJ. A charity registered in England and Wales (258197) and in Scotland (SC037554).